

**System Solutions**



**The Next Step In The Evolution**

The iNSIGHT™ 20 from Scantron® is a compact, affordable desktop model scanner that combines document imaging technology along with the proven data collection capabilities and accuracy of optical mark recognition (OMR). The iNSIGHT 20 is an industry exclusive scanner. Scantron applied over fifty years of engineering, forms design, applications development and customer support experience to ensure our customers' success. Whenever you need a reasonably priced and compact scanner that has the accuracy of OMR and the productivity and flexibility of Document Imaging, the iNSIGHT 20 is the right solution for you.

**Meeting Your Document Imaging and OMR Needs**

Due to its unique blend of capabilities, the iNSIGHT 20 is well priced and perfectly positioned to address applications such as testing, surveys attendance, grading, student portfolios, personnel records, archival, and general back file conversions. Depending on your requirements and budget, Scantron can meet the needs of your application. For higher-volume processing needs, Scantron also offers the iNSIGHT 30, which also combines full document imaging with the accuracy of OMR.

*Authorised distributor:*

**DPK Information Systems Ltd.**

3 Courtney Walsh Drive,  
Kingston 10, Jamaica, W.I.

Voice: 876-926-1361

Fax: 876-968-0909

info@dpk.com.jm

www.dpk.com.jm



## Data Collection

Data Collection is the process of reading marks from a printed form (e.g. tests, surveys, ballots, etc.) and converting it to ASCII data. The iNSIGHT 20 accurately scans the form for data while our ScanTools Plus™ software controls the scanning process and stores the data that is read. The scanner and software work together reading up to 1,800 sheets per hour.

The iNSIGHT 20 scanner can read written marks (such as bubbles, check marks, tick marks) and bar codes. The scanner, working with ScanTools Plus software, can also scan grayscale images for digital storage. In addition, the iNSIGHT 20 can read machine print and handprint using RealTime Character Recognition software (available separately).

## Outstanding Accuracy

### Data Collection Features

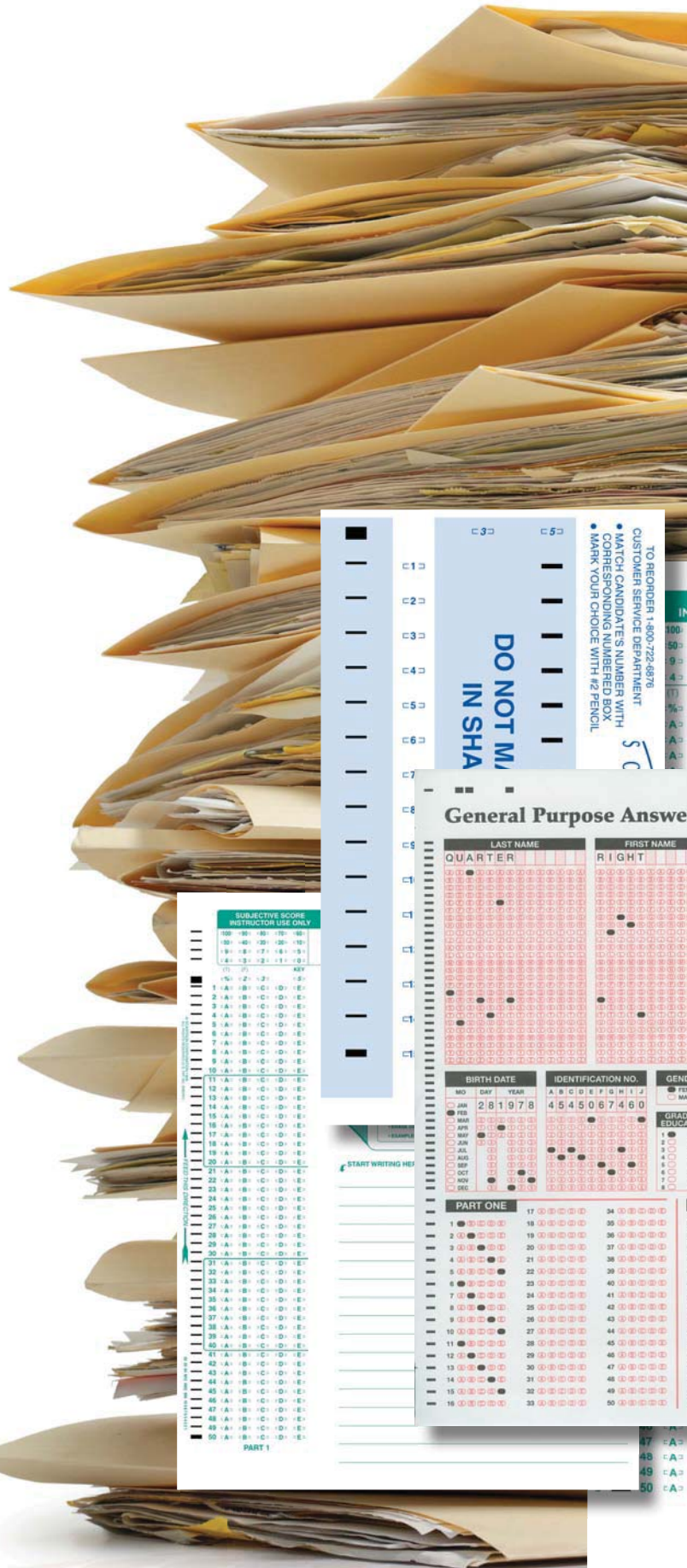
- Includes ScanTools Plus data collection software
- Provides 8-bit, 256 grayscale levels and 200 dpi images
- Ink and pencil mark detection
- Allows you to capture, name and archive image clips (TIFF, JPEG)
- Software recognized bar code
- Processes machine and hand print data with the optional RealTime Character Recognition utilizing NestorReader software
- Maintains software compatibility with existing ScanTools applications

## Document Imaging

Document imaging is the process of scanning paper documents, converting them to digital images. We know that the documents you work with aren't always the perfect size, shape or quality for scanning; that is what makes the iNSIGHT 20 perfect for your scanning needs.

This scanner can effortlessly handle sheets of multiple sizes and thickness in a single batch; from small card stock to long print-outs. After scanning, with one-click you can select the format of the scanned image, the resolution, the file type, and the destination of the resulting file using the Click&Scan software.

In document imaging mode, the iNSIGHT 20 scanner with Click&Scan software, can scan up to 1,800 two-sided black&white, grayscale and color images at 200 dots-per-inch (dpi) per hour.





## Exceptional Productivity

### Document Imaging Features

- Includes Click&Scan software which offers one-click functionality to send documents to file, email, printers, fax printers and desktop applications
- Utilizes TWAIN Driver (included)
- Output resolutions from 75 to 1200 dpi
- Interactive brightness, contrast, and color adjustment
- Optical resolution at 600 dpi
- Scans at speeds up to 30 page per minute/60 images per minute
- Simultaneous black & white, color or grayscale image output
- Save files in TIFF, JPEG, RTF and PDF formats
- Supported by Scantron's extensive services organization to ensure maximum uptime and customer satisfaction

### Customer Application Sidebars

#### Testing and Training

- Tests and learning assessment
- Instructor, performance, and course evaluations
- Enrollment and tracking
- Employee in-services
- Student profiles, documentation, and forms

#### Research and Evaluation

- Survey and questionnaire data collection
- Product research
- Program evaluations
- Competitive data collection
- Enrollment and applications

#### Human Resources

- Payroll/time sheets
- Benefit enrollments
- Applicant tracking
- Employee change of status
- Employee surveys
- 360-Degree surveys

#### Healthcare

- Patient encounter forms
- Patient satisfaction surveys
- Medical histories and patient forms
- Patient, needs and risk assessments
- Nurse staffing reports
- Continuing education evaluations

**SUBJECTIVE SCORE**  
**INSTRUCTOR USE ONLY**

1-10	11-20	21-30	31-40	41-50	51-60	61-70	71-80	81-90	91-100
100	90	80	70	60	50	40	30	20	10
0	1	2	3	4	5	6	7	8	9

**PART 1**

**KEY**

1-10	11-20	21-30	31-40	41-50	51-60	61-70	71-80	81-90	91-100
100	90	80	70	60	50	40	30	20	10
0	1	2	3	4	5	6	7	8	9

**Marking Instructions**

- Use black or blue pen or pencil.
- Make dark marks that fill completely.
- Do not use pens with ink through the paper.
- Make no stray marks.

**INCORRECT MARKS**

**Comments**

THIS IS THE COMMENT FIELD FOR THE QUALITY RIGHT FORM.

**PART TWO**

67 68 69 70 71 72 73 74 75 76 77 78 79 80 81 82 83 84 85 86 87 88 89 90 91 92 93 94 95 96 97 98 99 100

TO REORDER CALL 1-800-722-4876

TSN FORMS DEPARTMENT

## General Specifications

<b>Scanning Technology</b>	Dual CCD/Grayscale output bit depth is 256 levels (8-bit), Color capture bit depth is 48 bits (16 x 3), Color output bit depth is 24 bits (8 x 3).
<b>Optical Resolution</b>	600 dpi
<b>Multi-feed Detection</b>	With ultrasonic technology
<b>Connectivity</b>	USB 2.0
<b>Bundled Software</b>	TWAIN Drivers; Click & Scan; ScanTools Plus
<b>Electrical Requirements</b>	100-240 V (International); 50/60 Hz; Universal power supply included
<b>Power Consumption</b>	Sleep Mode < 6 watts, Running: < 35 watts
<b>Environmental Factors</b>	Energy Star qualified scanner; Operating temperature: 15-35° C (59-95° F); Operating humidity: 15-76 percent relative humidity
<b>Acoustical Noise</b> (operator position sound pressure level)	Standby mode: <32 dB(A); Operating mode: <65 dB(A)
<b>Physical Description</b>	30"x 13" x 10.75" operational, 6.5"x 13"X, 9.5" storage foot print, Weight: 16.5 lbs
<b>Recommended PC Configuration</b>	For documents up to 14 in. (356 mm) long at 400 dpi: Pentium® processor, 2 GHz 32-bit (x86) or 64-bit (x64) minimum, 2 GB RAM, 40 GB hard drive with minimum 20GB available hard disk space. For optimal performance when using a PC running the Windows 7 operating system, at least 3 GB RAM is recommended. For longer documents/higher resolutions: Pentium® processor, 2 GHz 32-bit (x86) or 64-bit (x64) minimum, 4 GB RAM, 40 GB hard drive with minimum 20 GB available hard disk space. Monitor should be 1024 x 768 or higher resolution.
<b>Supported Operating Systems</b>	Windows 7, 32-bit and 64-bit Editions. Windows Vista® Business Edition or greater, 32-bit Edition only SP1 or greater. Windows® XP Professional SP3 or greater. All Windows hot fixes for the service pack must also be installed.

## Data Collection Specification

<b>Throughput</b>	Up to 1800 Sheets per hour
<b>Read Heads</b>	200 dpi resolution, up to 256 levels of grayscale per pixel; pencil and ink read capabilities
<b>Forms</b>	2.5" x 5.5" to 8.5" x 14" (60-100 lb. Offset), Uses both Mark Reflex and Trans-Optic forms; Pencil and ink forms may be used
<b>Feeder Capacity</b>	40 sheets, 90 g/m2 (24 lb bond, 60 lb Offset)
<b>Spacing's supported</b>	.166, .166 48 cell, .200 inline, .200 offset, .200 line read, and .300 line read
<b>Barcode</b>	Standard - Software read through ScanTools
<b>Bundled Software</b>	ScanTools Plus

## Document Imaging Specifications

<b>Throughput</b> (200 dpi, landscape, letter size, black and white/grayscale/color)	Up to 30 page per minute/ 60 images per minute
<b>Image output</b>	Black and white, grayscale (8 bit), color (24 bit)
<b>Output resolution</b>	75, 100, 150, 200, 240, 300, 400, 600 and 1200 dpi
<b>Maximum document size</b>	216 mm x 863 mm (8.5 in. x 34 in.)
<b>Minimum document size</b>	64 mm x 89 mm (2.5 in. x 3.5 in.)
<b>Paper Thickness and Weight</b>	34-413 g/m2 9-110 lb.) paper
<b>Feeder Capacity</b>	Up to 70 sheets of 60 g/m <sup>2</sup> (16 lb.) paper
<b>Bundled Software</b>	TWAIN driver, Click & Scan
<b>File Format Outputs</b>	Single and multi-page TIFF, JPEG, RTE, PDF

Please visit us at [www.scantron.com](http://www.scantron.com) for a complete overview of INSIGHT system requirements or call us at **1-800-SCANTRON** for more information.

© 2011 Scantron Corporation. All rights reserved. Scantron and the Scantron logo are registered trademarks. P/N 277-223-004

